



ABN 23 039 013 724  
Level 2, Building 8  
Forest Central Business Park  
49 Frenchs Forest Road East  
Frenchs Forest NSW 2086

PO Box 652  
Forestville, NSW, 2087  
PH: (02) 9451 3455  
FX: (02) 9451 3466  
Email: info@dbce.com.au

Ref: 24137

23rd October 2024

Sammy Hamilton  
43A The Corso, Manly  
New South Wales 2095

**RE: Supersite Monopole on the M4 Motorway Near Brabham Drive,**  
**Eastern Creek, NSW**  
**DA For Continued Signage Use, Structural Feasibility and Safety Report**

**1.0 Introduction**

This assessment has been conducted by Dennis Bunt Consulting Engineers Pty Ltd (DBCE) at the request of Keylan. No responsibility under the law of contract, tort or otherwise for any loss or damage is accepted.

The purpose of this assessment was to perform a structural and safety review of the existing supersite sign on the M4 Motorway near Brabham drive, Eastern Creek for the DA approval by TfNSW for Continued Signage use.

The existing signage was inspected on the 12th of September 2024 as part of DBCE's ongoing maintenance inspections for JCDecaux.

The existing signage was documented by DBCE on the 25th Of September 2024 for TfNSW, drawing number DS2024/001013, DA01(1).

The following documents were used in this assessment.

1. Transport Corridor Outdoor Advertising and Signage Guidelines, NSW Government (November 2017)
2. AS1170.0-2002                      Structural design actions Part 0: General principles
3. AS1170.1-2002                      Structural design actions Part 1: Permanent, imposed and other actions.
4. AS1170.2-2021                      Structural design actions Part 2: Wind actions
5. AS4100-2020                        Steel structures.
6. AS1657-2018                        Fixed platforms, walkways, stairways, and ladders - Design, construction and installation

This report was limited to a visual examination only and no calculations were performed.

## **2.0 Observations/ Discussion**

The existing sign is a front lit supersite sign on a monopole. The sign consists of a banner which is placed against a steel panel and is tensioned both horizontally and vertically. The panel is fixed to a three-dimensional (3D) steel frame that is supported off a steel pole. The steel pole is supported off a concrete footing. Refer to photos 1 to 4.

There are two walkways in the 3D steel frame behind the panel, near the base of the panel and one metre from the top of the panel. The walkways enable the banners to be changed when required. There are propriety balustrades on the back and sides of the walkways with the panel in front acting as a barrier to prevent falls. Refer to photos 5 to 10.

The lower walkway is accessed by a temporary ladder that is placed between ladder brackets fixed to the back of the walkway. There is a gate in the balustrade at this location to enable access. Refer to photo 5.

The steel column, 3D frame, sign panel and walkways were in as new condition with no corrosion.

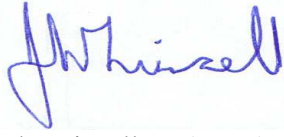
The sign is located to the side to the motorway and does not overhang it. There is a road safety barrier between the M4 motorway and the sign pole to prevent vehicles impacting it. Refer to photo 1.

## **3.0 Recommendations/ Conclusions**

- The sign structure is in accordance with the relevant Australian standards and Transport Corridor Outdoor Advertising and Signage Guidelines, NSW Government (November 2017)
- The steel pole, 3D steel frame, sign panel and walkways are all galvanised and in as new condition.
- The structure and the sign box are rated as category 1 by DBCE. ie new or as new condition. Re-inspection will be in September 2028, ie approximately 4 years from the time of the last inspection.
- There are presently no structural or safety issues requiring fixing.

If you have any questions, please do not hesitate to ring the undersigned on 0400 023 714

Yours Faithfully,

A handwritten signature in blue ink, appearing to read 'J Linsell', is positioned below the closing 'Yours Faithfully,'. The signature is fluid and cursive, with the first name 'John' and last name 'Linsell' clearly distinguishable.

John Linsell BE(Hons), MIEAust, CPEng, NPER(Struct)  
for Dennis Bunt Consulting Engineers Pty Ltd.



Photo 1



Photo 2



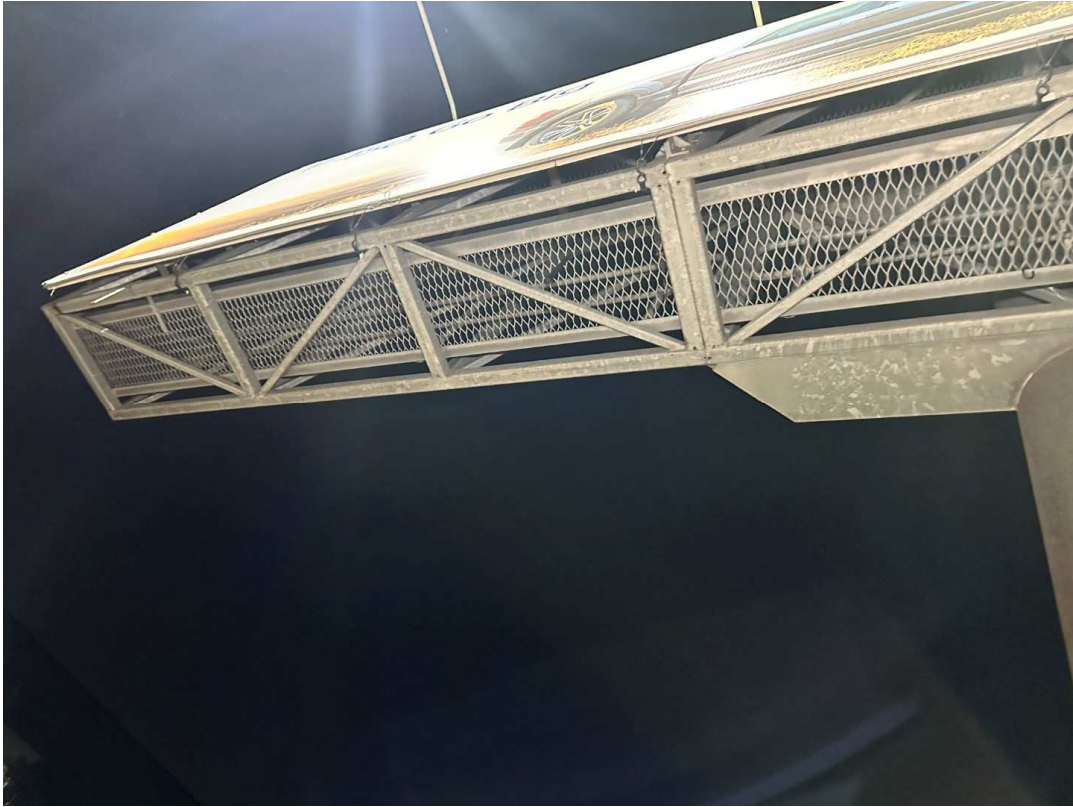


Photo 3



Photo 4



Photo 5



Photo 6





Photo 7

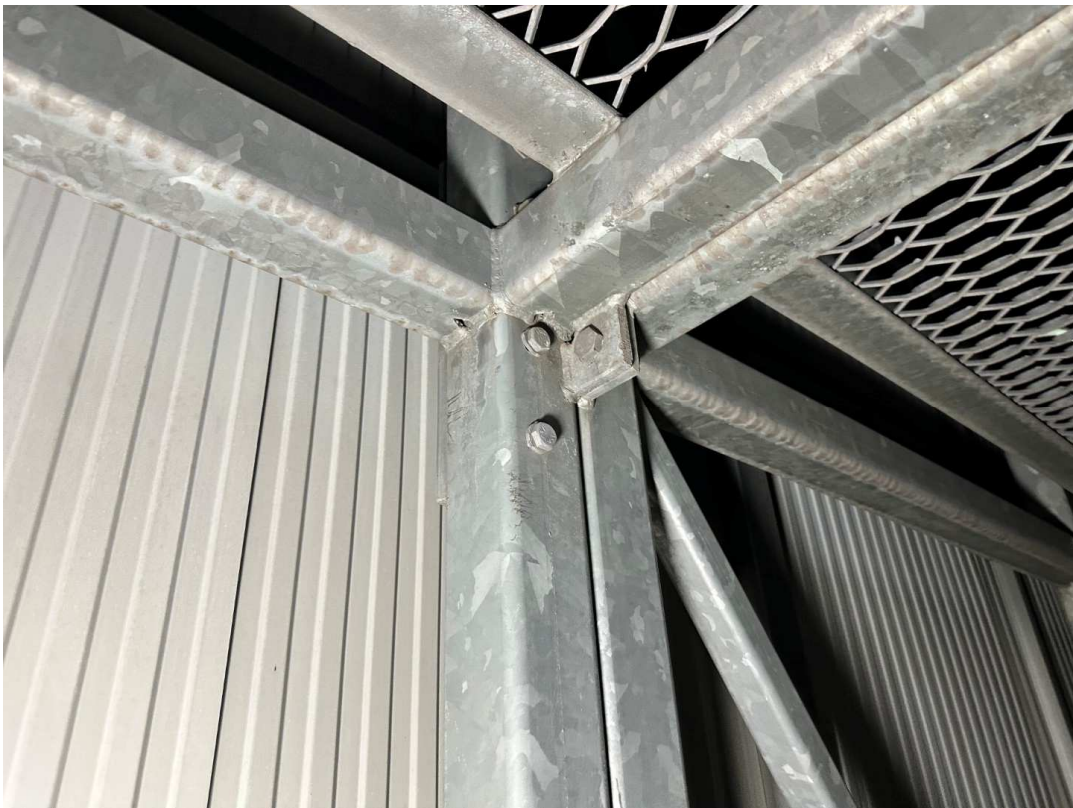


Photo 8

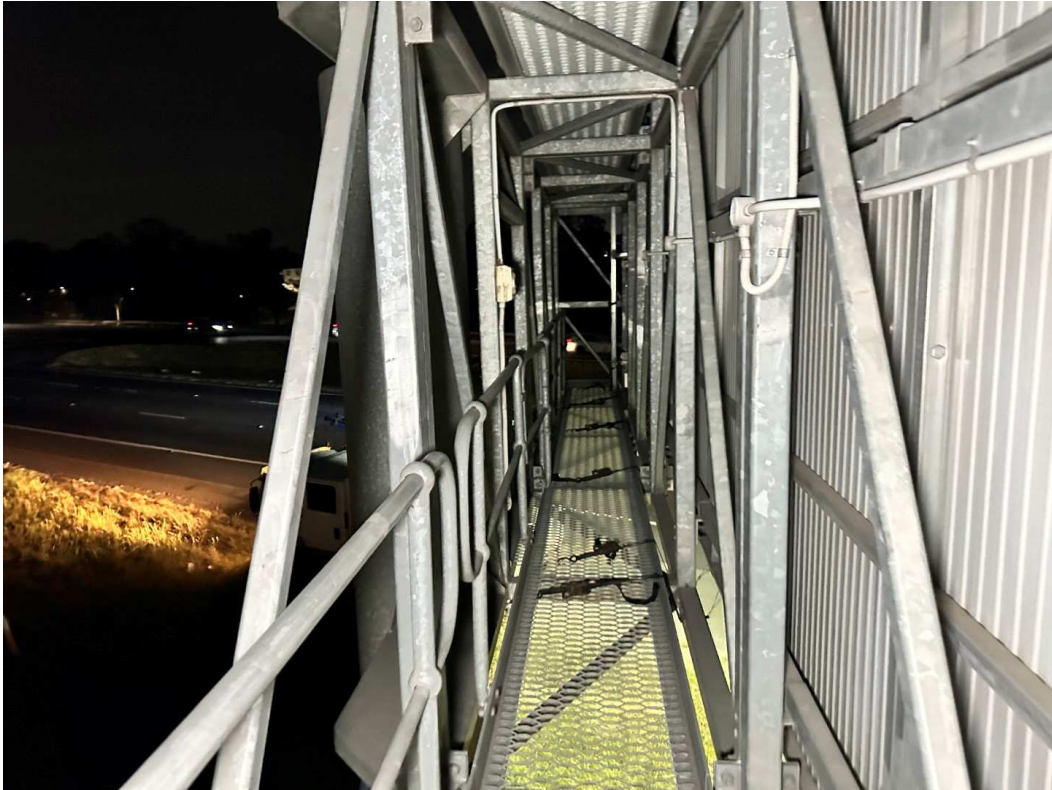


Photo 9

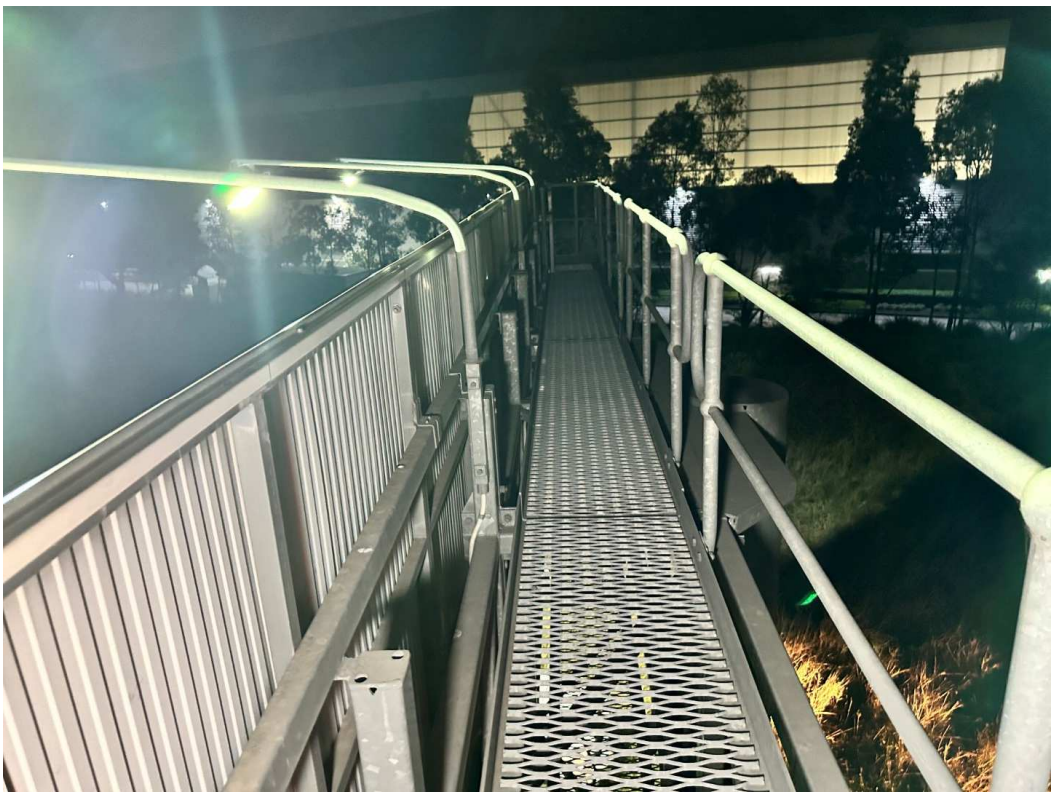


Photo 10